



**DowKey®
Microwave**
CORPORATION

Available with either CMOS Binary logic decoding circuits or MOSFET pulse latching electronics, these DowKey INTELLIGENT RELAY Multithrow Switches were designed to simplify the physical construction and reduce the amount of supporting (logic and switch driver) electronics required to implement complex switch assemblies. These SP7T and SP10T DowKey INTELLIGENT RELAY IN-LINE Multithrow Switches are ideal for complex switch matrix or test equipment applications.

Typical applications for the 473-4A3 Series include:

- Test Equipment Band Selection
- Switch Matrixes



**DowKey® 473 to 4A3 Series
INTELLIGENT RELAY
SP7T & SP10T IN-LINE**

RF Characteristics

Frequency GHz	VSWR (max)	Isolation dB (min)	Ins. Loss dB (max)			RF Power Watts (CW)
			1-3	4-6	7-10	
0-2	1.50	80	0.20	0.30	0.40	50
2-8	1.50	70	0.40	0.50	0.80	25
8-12	1.50	65	0.50	0.70	1.00	15
12-18	2.00	60	1.00	1.50	2.00	10

Power handling capability is for through path only. Optional internal termination is limited to 500 milliwatts dissipation

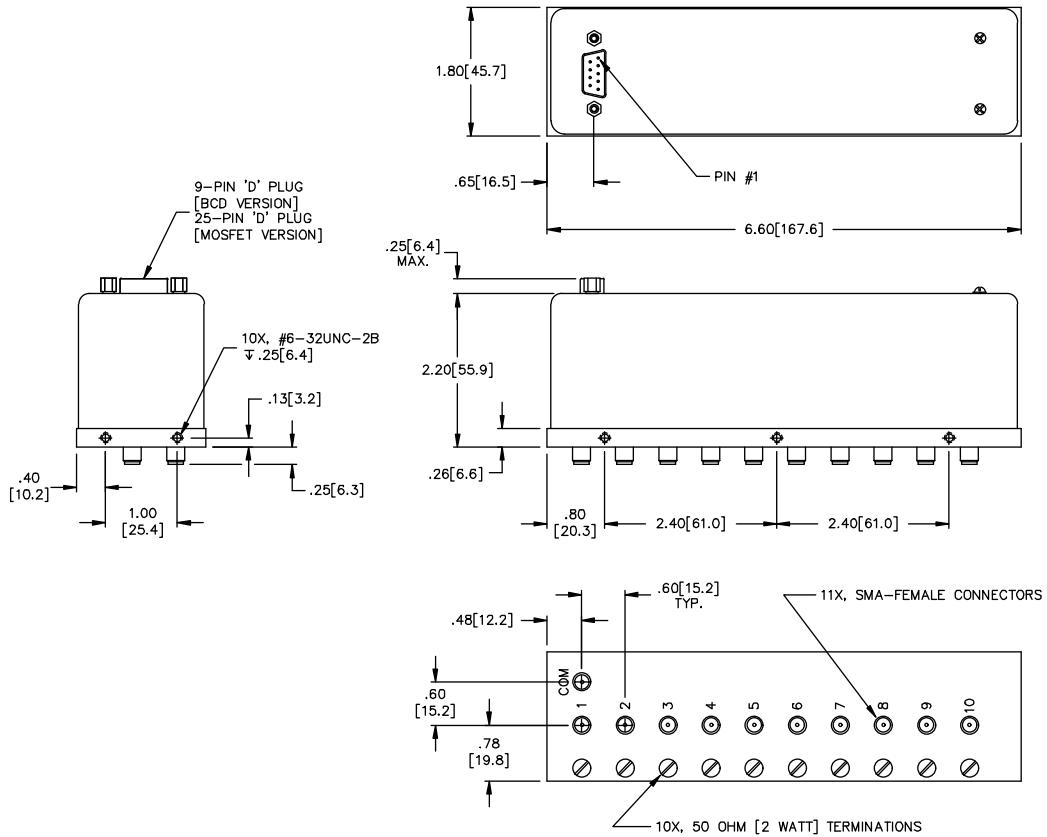
Specifications :

- Operating Voltage:**
(across temperature range)
15 Vdc 187 mA
28 Vdc (24-32 Vdc)
- Coil Current (Nominal):**
15 Vdc 187 mA
28 Vdc 177 mA
- Switching Time:**
15 mS maximum
- Operating Temperature:**
0°C to +65°C
- Mechanical Life, Cycles:**
1 x 10⁶ minimum
- RF Connectors:**
SMA-Female Only

Connectors and Part Numbers

Terminations		Descriptions
None	50Ω	
SP7T Switches		
473-320802C	473-320803C	12 Vdc Coil, MOSFET Drivers, Pulse Latching
473-330802C	473-330803C	28 Vdc Coil, MOSFET Drivers, Pulse Latching
473-420802E	473-420803E	12 Vdc Coil, Binary Decoding, with ENABLE, Latching, Self-Cutoff
473-420802E	473-430803E	28 Vdc Coil, Binary Decoding, with ENABLE, Latching, Self-Cutoff
SP8T Switches		
483-320802C	483-320803C	12 Vdc Coil, MOSFET Drivers, Pulse Latching
483-330802C	483-330803C	28 Vdc Coil, MOSFET Drivers, Pulse Latching
483-420802E	483-420803E	12 Vdc Coil, Binary Decoding, with ENABLE, Latching, Self-Cutoff
483-430802E	483-430803E	28 Vdc Coil, Binary Decoding, with ENABLE, Latching, Self-Cutoff
SP9T Switches		
493-320802C	493-320803C	12 Vdc Coil, MOSFET Drivers, Pulse Latching
493-330802C	493-330803C	28 Vdc Coil, MOSFET Drivers, Pulse Latching
493-420802E	493-420803E	12 Vdc Coil, Binary Decoding, with ENABLE, Latching, Self-Cutoff
493-430802E	493-430803E	28 Vdc Coil, Binary Decoding, with ENABLE, Latching, Self-Cutoff
SP4T Switches		
4A3-320802C	4A3-320803C	12 Vdc Coil, MOSFET Drivers, Pulse Latching
4A3-330802C	4A3-330803C	28 Vdc Coil, MOSFET Drivers, Pulse Latching
4A3-420802E	4A3-420803E	12 Vdc Coil, Binary Decoding, with ENABLE, Latching, Self-Cutoff
4A3-430802E	4A3-430803E	28 Vdc Coil, Binary Decoding, with ENABLE, Latching, Self-Cutoff

Mechanical



Electrical

