

Coaxial Amplifier

ZHL-42

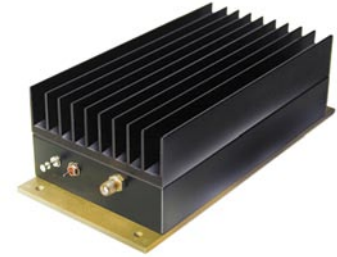
50Ω Medium High Power 700 to 4200 MHz

Features

- wideband, 700 to 4200 MHz
- high IP3, +38 dBm typ
- high gain, 30 dBm min.
- medium high power, 28 dBm min.

Applications

- communication systems
- instrumentation
- cellular
- laboratory



CASE STYLE: U36

Connectors	Model	Price	Qty.
SMA	ZHL-42	\$895.00	(1-9)

Amplifier Electrical Specifications

MODEL NO.	FREQUENCY (MHz)		GAIN (dB)		MAXIMUM POWER (dBm)		DYNAMIC RANGE		VSWR (:1) Max.		DC POWER	
	f_L	f_U	Min.	Flatness Max.	Output (1 dB Compr. min.)	Input (no damage)	NF (dB) Typ.	IP3 (dBm) Typ.	In	Out	Volt (V) Nom.	Current (A) Max.
ZHL-42	700	4200	30	±1.0*	+28	+5	10	+38	2.5	2.5	15	0.88

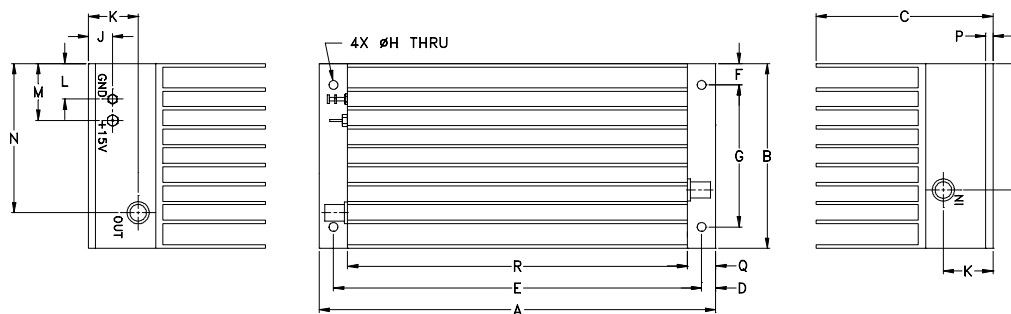
*Measured at 25°C

Open load is not recommended, potentially can cause damage.
With no load derate max input power by 20 dB

Maximum Ratings

Operating Temperature	-20°C to 65°C
Storage Temperature	-55°C to 100°C
DC Voltage	+20V Max.

Outline Drawing



Outline Dimensions (inch/mm)

A	B	C	D	E	F	G	H	J	
7.00	3.25	2.13	.25	6.500	.38	2.500	.156	.73	
177.80	82.55	54.10	6.35	165.10	9.65	63.50	3.96	18.54	
K	L	M	N	P	Q	R	S	wt	
.88	.63	1.13	2.23	.125	.50	6.00	2.23	grams	
22.35	16.00	28.70	56.64	3.18	12.70	152.40	56.64	900	



INTERNET <http://www.minicircuits.com>

P.O. Box 350166, Brooklyn, New York 11235-0003 (718) 934-4500 Fax (718) 332-4661

Distribution Centers NORTH AMERICA 800-654-7949 • 417-335-5935 • Fax 417-335-5945 • EUROPE 44-1252-832600 • Fax 44-1252-837010

Mini-Circuits ISO 9001 & ISO 14001 Certified

REV. OR
M98142
ZHL-42
061026
Page 1 of 2

FREQUENCY (MHz)	GAIN (dB)			DIRECTIVITY (dB)			VSWR (:1)		NOISE FIGURE (dB)	POUT at 1 dB COMPR. (dBm)
	12V	15V	16V	12V	15V	16V	IN	OUT		
700.00	31.34	33.00	32.99	34.70	35.90	41.90	1.55	1.47	8.63	28.60
814.00	31.52	33.02	33.00	34.30	31.40	23.70	1.60	1.40	8.12	28.78
1020.80	31.78	33.03	33.04	34.50	37.70	35.40	1.53	1.51	7.74	29.48
1280.10	32.07	33.21	33.20	34.60	31.70	32.40	1.28	1.78	7.54	29.71
1605.20	31.92	33.15	33.14	32.20	33.80	41.80	1.47	1.81	7.49	30.02
1956.40	31.68	32.97	32.96	28.00	30.30	29.70	1.58	1.58	7.67	29.81
2225.60	31.57	32.90	32.89	49.40	35.10	30.30	1.38	1.36	7.58	29.28
2494.90	31.58	32.98	32.99	29.30	30.80	24.80	1.15	1.36	7.55	28.32
2674.40	31.83	33.29	33.29	33.80	26.30	22.80	1.18	1.58	7.54	28.40
2853.80	31.99	33.45	33.46	31.20	26.30	42.00	1.21	1.78	7.55	29.02
3123.10	31.71	33.00	33.01	30.00	26.80	28.50	1.16	1.92	7.59	29.90
3392.30	32.27	33.29	33.30	33.30	21.90	35.80	1.32	1.80	7.58	29.85
3661.50	31.99	32.65	32.64	35.50	23.30	29.60	1.82	1.60	7.41	29.43
3930.80	32.37	32.95	32.93	28.10	23.40	31.20	1.87	1.35	7.53	28.30
4200.00	32.24	33.12	33.13	28.10	25.90	21.50	1.52	1.20	7.52	28.61

