

## Stocked Electro-Mechanical Switches (SEM Series)

**Stocked EM** Standard EM Custom EM Standard PIN Multi-Throw PIN High Power PIN Switched Attenuators Switched Filter Banks Limiters

### 2P2T (Transfer) SMA (F) DC-18 GHz



#### Features

- Failsafe and Latching Models
- TTL Logic Control
- Suppression Diodes
- Indicator Circuits

#### Models

- XSEM323, XSEM323D, XSEM323L, XSEM323LD, XSEM323LD-24

## Stocked Electro-Mechanical Switches (SEM Series)

Stocked EM   Standard EM   Custom EM   Standard PIN   Multi-Throw PIN   High Power PIN   Switched Attenuators   Switched Filter Banks   Limiters

### 2P2T (Transfer) SMA (F) DC-18 GHz

Model	XSEM323	XSEM323D	XSEM323L	XSEM323LD	XSEM323LD-24
Features	Transfer (SMA), Failsafe, Indicator Ckt.	Transfer (SMA), Failsafe, TTL*, Suppression Diodes, Indicator Ckt.	Transfer (SMA), Pulse Latching, Indicator Ckt.	Transfer (SMA), Pulse Latching, TTL*	Transfer (SMA), Pulse Latching, TTL*
Actuating Current	280 mA @28 Vdc & 25°C	280 mA @28 Vdc & 25°C	200 mA @28 Vdc & 25°C	200 mA @28 Vdc & 25°C	275mA @24 Vdc & 25°C
Frequency Range (GHz)	DC-18	DC-18	DC-18	DC-18	DC-18
Insertion Loss dB (max) DC-3 GHz	0.2	0.2	0.2	0.2	0.2
Insertion Loss dB (max) 3-8 GHz	0.3	0.3	0.3	0.3	0.3
Insertion Loss dB (max) 8-12.4 GHz	0.4	0.4	0.4	0.4	0.4
Insertion Loss dB (max) 12.4-18 GHz	0.5	0.5	0.5	0.5	0.5
VSWR (max) DC-3 GHz	1.2:1	N/A	1.2:1	1.2:1	1.2:1
VSWR (max) 3-8 GHz	1.3:1	1.4:1	1.3:1	1.3:1	1.3:1
VSWR (max) 8-12.4 GHz	1.4:1	1.3:1	1.4:1	1.4:1	1.4:1
Isolation dB (min) DC-3 GHz	80	80	80	80	80
Isolation dB (min) 3-8 GHz	70	70	70	70	70
Isolation dB (min) 8-12.4 GHz	60	60	60	60	60
Isolation dB (min) 12.4-18 GHz	60	60	60	60	60
Type	N/A	Transfer	Transfer	Transfer	Transfer
Actuation	N/A	N/A	Latching, 28V	Latching, 28V	Latching, 24V
Indicator Circuitry	Included	Included	Included	N/A	N/A
Suppression Diodes	N/A	Included	N/A	Included	N/A
TTL Logic	N/A	Included	N/A	Included	Included
Special Notes:	N/A	A	N/A	A	A

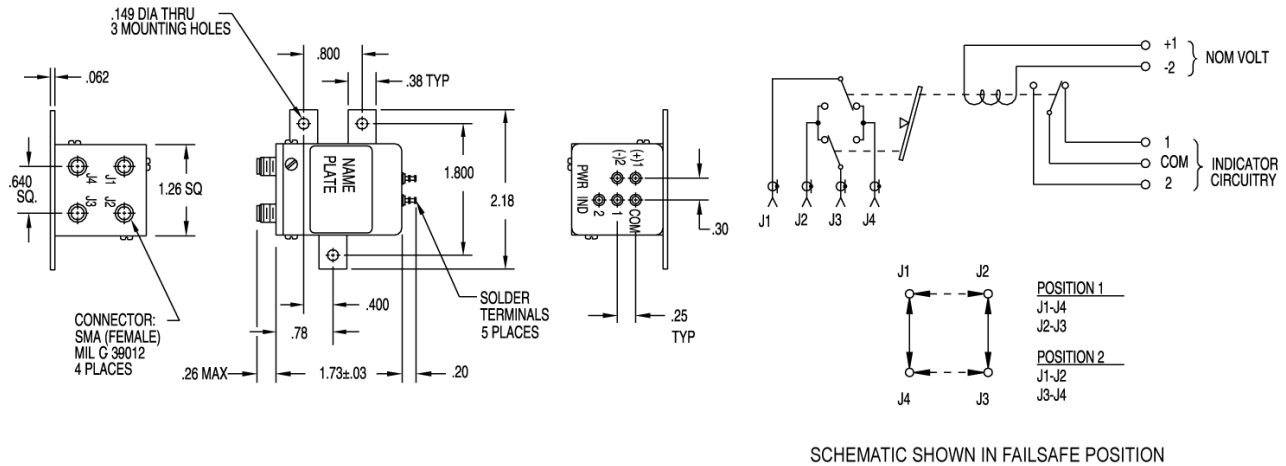
**Special Notes:**

- A: 1. Selected switch position is controlled by TTL Logic.
2. Switch requires only nominal +28 Vdc for coils (additional 5 Vdc is not required).
3. TTL LOGIC LEVEL: Low 0 to .8 Vdc, High 2.5 to 5.0 Vdc
4. TTL LOGIC INPUT CURRENT: Low 0 mA, High 1.6 mA max @ 3.85 Vdc

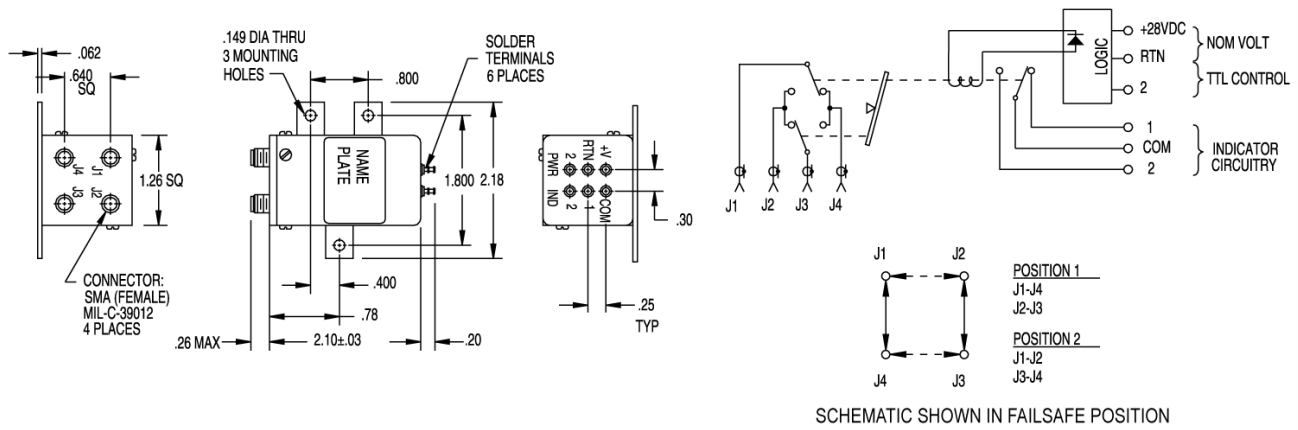
# Stocked Electro-Mechanical Switches (SEM Series)

Stocked EM   Standard EM   Custom EM   Standard PIN   Multi-Throw PIN   High Power PIN   Switched Attenuators   Switched Filter Banks   Limiters

## 2P2T (Transfer) SMA (F) DC-18 GHz



XSEM323

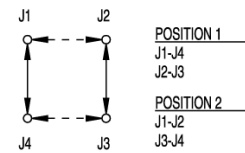
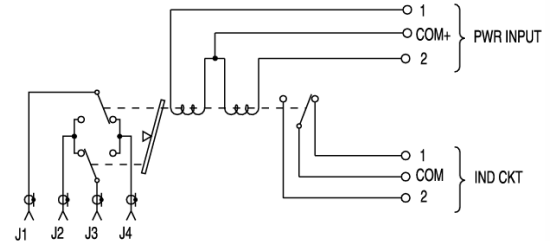
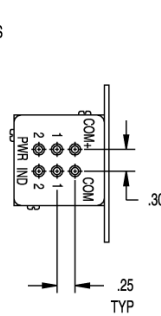
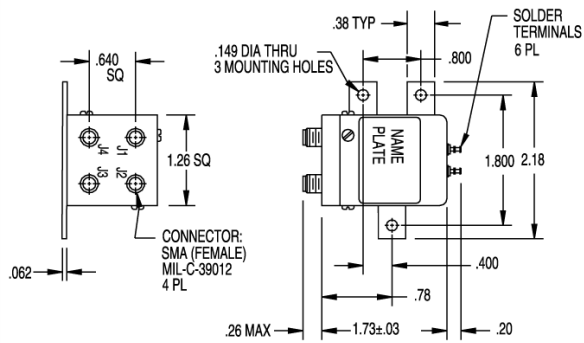


XSEM323D

# Stocked Electro-Mechanical Switches (SEM Series)

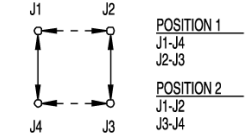
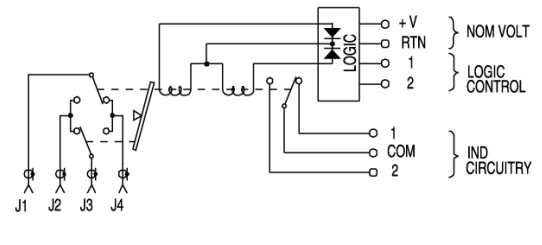
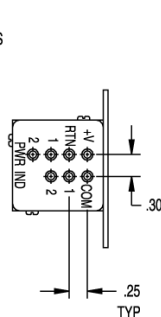
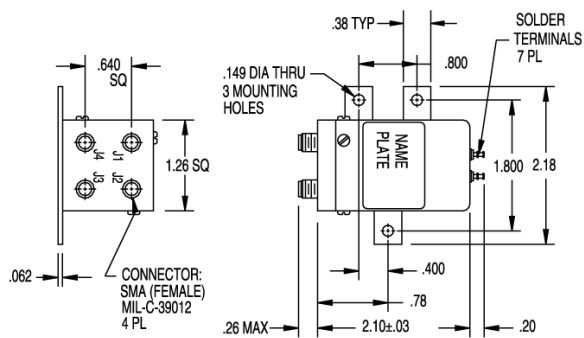
Stocked EM   Standard EM   Custom EM   Standard PIN   Multi-Throw PIN   High Power PIN   Switched Attenuators   Switched Filter Banks   Limiters

## 2P2T (Transfer) SMA (F) DC-18 GHz



SCHEMATIC SHOWN WITH POSITION 1 CLOSED

XSEM323L



SCHEMATIC SHOWN WITH POSITION 1 CLOSED

XSEM323LD, XSEM323LD-24