

Test & Measurement — Digitally Controlled Tunable Filters

◆ Features:

- Digital Control Allows Complete Automated Operation Via Remote Interfaces.
- GPIB (IEEE-488) Standard Remote Interface, RS-232, RS-422, and BCD also Available.
- 24 VDC Standard Drive Voltage, 12 VDC, and 110 VAC also Available
- Contact Factory for Custom Tuning Ranges and Configurations.



◆ Applications:

- ATE Labs
- Wireless Communications
- Military Communications

◆ Specifications:

K&L Model Bandpass	Frequency Range (MHz)	Passband Insertion Loss	3 dB BW	VSWR	Shape Factor 30 dB to 3 dB / 50 dB to 3 dB	Power Handling
D5BT-30/76-5-N/N-GRI	30-76	1.3 dB Max	5%	1.5:1	2.2:1 / 3.5:1	50 Watts CW
D5BT-63/125-5-N/N-GRI	63-125	1.3 dB Max	5%	1.5:1	2.2:1 / 3.5:1	50 Watts CW
D5BT-125/250-5-N/N-GRI	125-250	1.3 dB Max	5%	1.5:1	2.2:1 / 3.5:1	50 Watts CW
D5BT-250/500-5-N/N-GRI	250-500	1.0 dB Max	5%	1.5:1	2.2:1 / 3.5:1	50 Watts CW
D5BT-375/750-5-N/N-GRI	375-750	1.0 dB Max	5%	1.5:1	2.2:1 / 3.5:1	50 Watts CW
D5BT-500/1000-5-N/N-GRI	500-1000	1.0 dB Max	5%	1.5:1	2.2:1 / 3.5:1	50 Watts CW
D5BT-750/1500-5-N/N-GRI	750-1500	1.0 dB Max	5%	1.5:1	2.2:1 / 3.5:1	50 Watts CW
D5BT-1000/2000-5-N/N-GRI	1000-2000	1.0 dB Max	5%	1.5:1	2.2:1 / 3.5:1	50 Watts CW
D5BT-1200/2600-5-N/N-GRI	1200-2600	1.0 dB Max	5%	1.5:1	2.2:1 / 3.5:1	50 Watts CW

Filter Type: 5 Section Bandpass

Impedance: 50 Ohms

RF Connectors: Type N Standard, SMA/TNC/BNC Optional

Digital Interface: GPIB Standard, RS-232 / RS-422 / BCD Optional

Control Power: 24 VDC Standard, 12 VDC / 110 VAC Optional

Custom configurations and ruggedized versions also available. Contact the factory for custom requirements.

Filtering Solutions for Your Global Market

USA

Phone: 410-749-2424

FAX: 410-749-5725

Email: sales@klmicrowave.com

EUROPE

Phone: +44-(0)-1908-547920

FAX: +44-(0)-1908-695284

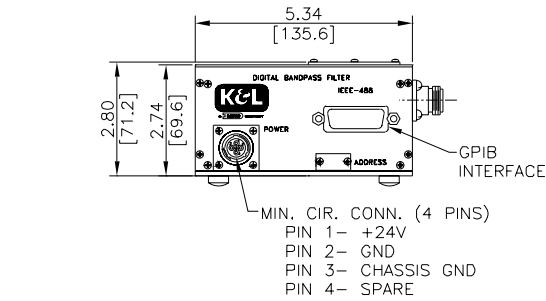
Email: sales@kleurope.com

Order On-Line @ www.klmicrowave.com

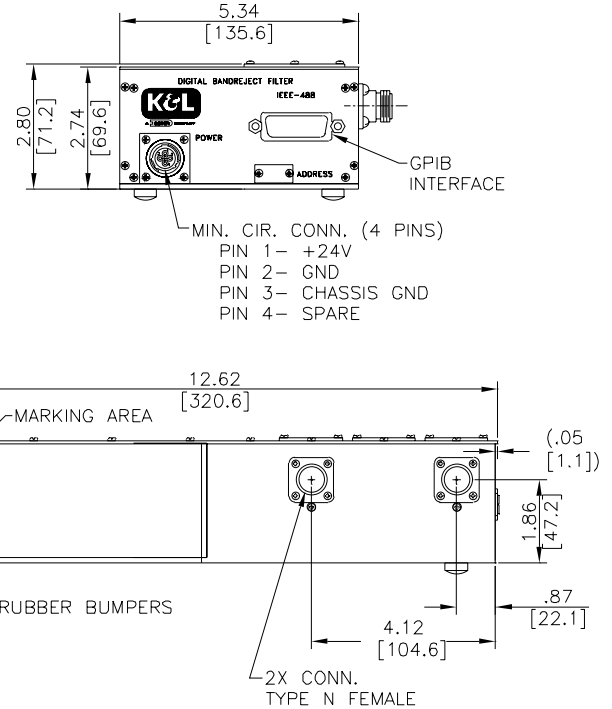


Test & Measurement — Digitally Controlled Tunable Filters

◆ D5BT Mechanical:



◆ D3TNF Mechanical:



For D5BT-1200/2600-5-N/N-GRI =

- * Length is 11.92" [303mm]
- ** Connector Diameter is .67" [17mm]
- *** Connector Diameter is 5.17" [131mm]

◆ Specifications:

K&L Model Bandreject	Frequency Range (MHz)	Passband Insertion Loss	3 dB BW (MHz) (Relative)	40 dB Min. BW (MHz) (Relative)	Typ. Notch Depth (Relative)	VSWR	Power Handling
D3TNF-30/76-N/N-GRI	30-76	0.5 dB Max	1 - 2.5	100	50 dB	1.5:1	50 Watts CW
D3TNF-50/100-N/N-GRI	50-100	0.5 dB Max	3 - 6	300	50 dB	1.5:1	50 Watts CW
D3TNF-100/200-N/N-GRI	100-200	0.5 dB Max	3 - 6	300	50 dB	1.5:1	50 Watts CW
D3TNF-200/400-N/N-GRI	200-400	0.5 dB Max	3 - 7	300	50 dB	1.5:1	50 Watts CW
D3TNF-250/500-N/N-GRI	250-500	0.5 dB Max	3 - 7	300	50 dB	1.5:1	50 Watts CW
D3TNF-500/1000-N/N-GRI	500-1000	0.5 dB Max	6 - 16	400	45 dB	1.5:1	50 Watts CW
D3TNF-1000/2000-N/N-GRI	1000-2000	0.5 dB Max	9 - 24	400	45 dB	1.5:1	50 Watts CW

Filter Type:	5 Section Bandpass
Impedance:	50 Ohms
RF Connectors:	Type N Standard, SMA/TNC/BNC Optional
Digital Interface:	GPIB Standard, RS-232 / RS-422 / BCD Optional
Control Power:	24 VDC Standard, 12 VDC / 110 VAC Optional

Custom configurations and ruggedized versions also available. Contact the factory for custom requirements.



Filtering Solutions for Your Global Market

USA
 Phone: 410-749-2424
 FAX: 410-749-5725
 Email: sales@klmicrowave.com

EUROPE
 Phone: +44-(0)-1908-547920
 FAX: +44-(0)-1908-695284
 Email: sales@kleurope.com

Order On-Line @ www.klmicrowave.com