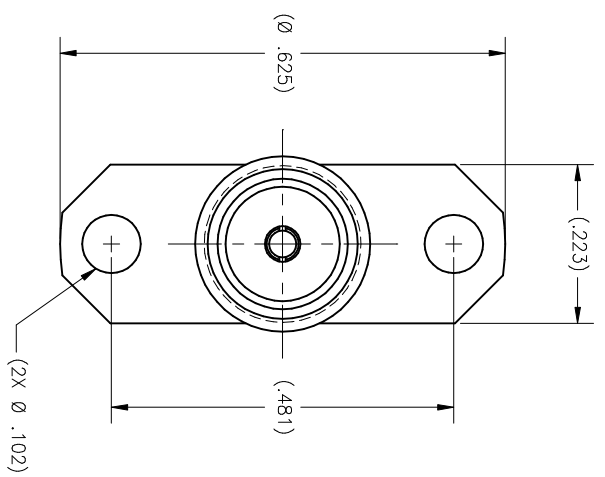
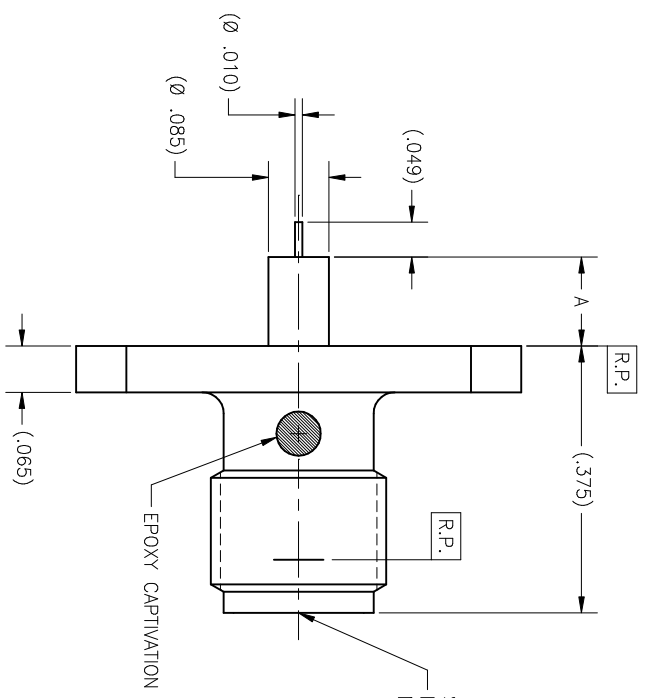


4		3		2		1	
P/N	APPLICABLE NOTE(S)	ZONE	REV	DESCRIPTION	DATE	BY	
-1CC	1.2	A	ECO	19913	01.22.07	SLM	
-1CCSF	1.2						
-2CC	1.2						
-2CCSF	1.2						



REVISIONS	DATE	BY

MATERIAL(S):	ELECTRICAL:	MECHANICAL:	ENVIRONMENTAL:
Body: 303 sst per ASTM A-582. Center Conductor: BeCu alloy per ASTM B-196. Dielectric: PTFE per ASTM D-1710. Epoxy: Sigma VF Type HV	Impedance: 50 Ohms nominal. Frequency Range: DC to 18 GHz. VSWR: 1.05 + .007*(GHz) ² Insertion Loss: .04 x √f(GHz) dB max. Working Voltage: 335 Vrms max @ sea level. DWV: 1,000 Vrms at sea level; Test at 60 Hz. R.F. HiPot Voltage: 670 Vrms @ 7.5 MHz. Corona Level: 250 Vrms @ 70,000 ft. Insulation Resistance: 5,000 MegOhms min. Contact Resistance: Center Contact: 4.0 Milliohm max. Outer Contact: 2.0 Milliohm max.	Mating Characteristics: Interface per Mil-Std-348. Connector Durability: 500 cycles min @ 12 cycles/minute max. Permeability: Less than 2.0 mu. Center Contact Captivation: Axial Force: 6 pounds min. Radial Torque: 4 inch-ounces min.	Temperature Range: -55°C to +165°C. Thermal Shock: Mil-Std-202, Method 107, Test Cond. B. Moisture Resistance: Mil-Std-202, Method 106, Insulation resistance at least 200 Megohms within 5 minutes after removal from humidity. Corrosion: Mil-Std-202, Method 101, Test Cond. B. Vibration: Mil-Std-202, Method 204, Test Cond. D. Shock: Mil-Std-202, Method 213, Test Cond. I.

FINISH(ES):	APPLICABLE TENSOLITE DOCUMENTS	TOLERANCES AND NOTES	SEE NOTES																
Body (For CCSF's): Passivate per ASTM A-967. Body (For CC's): Gold plate per ASTM B-488, over nickel under plate per AMS-QQ-N-290. Center Conductor: Gold plate per ASTM B-488, over nickel under plate per AMS-QQ-N-290.	<table border="1"> <tr> <th>WORK STD</th> <th>PROD INST</th> <th>ASST INST</th> </tr> <tr> <td>NA</td> <td>NA</td> <td>NA</td> </tr> </table>	WORK STD	PROD INST	ASST INST	NA	NA	NA	DIMENSIONS ARE IN INCHES UNLESS NOTED OTHERWISE. FRACTION ± 1/32 1. MACHINE FINISH: 63/ rms 2. BREAK ALL SHARP EDGES .003 MAX. 3. MACHINED SURFACES ± .005 UNLESS OTHERWISE NOTED. 4. HOLE DIMENSIONS ± .002 PER INCH. 5. ALL DIMENSIONS EXCEPTIVE WITHIN .002 TIR. 6. DIMENSIONS TO CENTER UNLESS OTHERWISE NOTED. 7. DIMENSIONS TO SURFACE UNLESS OTHERWISE NOTED. 8. DIMENSIONS TO CENTER UNLESS OTHERWISE NOTED. 9. DIMENSIONS TO SURFACE UNLESS OTHERWISE NOTED. 10. REMOVE ALL BURRS.	<table border="1"> <tr> <th>APPROVAL</th> <th>DATE</th> </tr> <tr> <td>ATV</td> <td>10/24/01</td> </tr> <tr> <td>CHEKED</td> <td></td> </tr> <tr> <td>QUALITY</td> <td></td> </tr> <tr> <td>ENGINEERING</td> <td>01.23.07</td> </tr> </table>	APPROVAL	DATE	ATV	10/24/01	CHEKED		QUALITY		ENGINEERING	01.23.07
WORK STD	PROD INST	ASST INST																	
NA	NA	NA																	
APPROVAL	DATE																		
ATV	10/24/01																		
CHEKED																			
QUALITY																			
ENGINEERING	01.23.07																		